

# Piano: Strong-Hand: Alt.Thumbs 3

(Diatonic Pentachords--C Major. Parallel 1 and 2.)

JimO

## 1. C Major Pentachord.

The first system of the exercise, measures 1-4, is in 4/4 time. The right hand plays a C major pentachord (C4-D4-E4-F4-G4) in a parallel motion, starting on a half note C4 and moving up stepwise to a half note G4. The left hand plays the same pentachord in a parallel motion, starting on a half note C3 and moving up stepwise to a half note G3. The system ends with a double bar line.

The second system of the exercise, measures 5-8, continues the parallel motion of the C major pentachord. The right hand starts on a half note A4 and moves up stepwise to a half note E5. The left hand starts on a half note A3 and moves up stepwise to a half note E4. The system ends with a double bar line.

## 2. D Minor Pentachord.

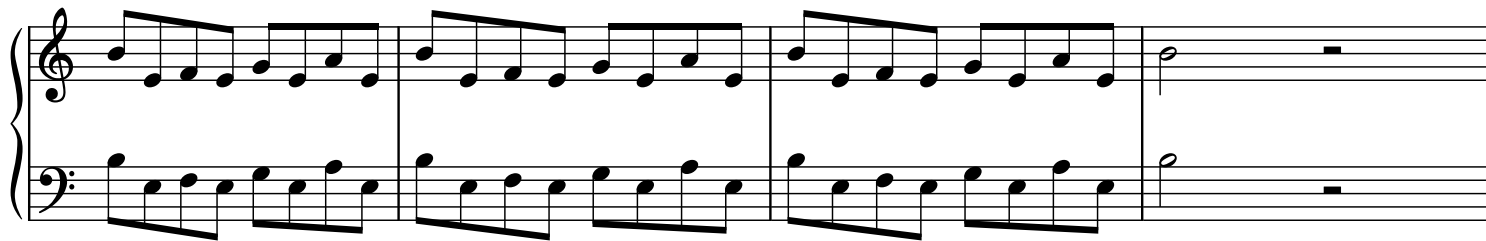
The third system of the exercise, measures 9-12, is in 4/4 time. The right hand plays a D minor pentachord (D4-E4-F4-G4-A4) in a parallel motion, starting on a half note D4 and moving up stepwise to a half note A4. The left hand plays the same pentachord in a parallel motion, starting on a half note D3 and moving up stepwise to a half note A3. The system ends with a double bar line.

The fourth system of the exercise, measures 13-16, continues the parallel motion of the D minor pentachord. The right hand starts on a half note B4 and moves up stepwise to a half note F5. The left hand starts on a half note B3 and moves up stepwise to a half note F4. The system ends with a double bar line.

## 3. E Phrygian Pentachord.

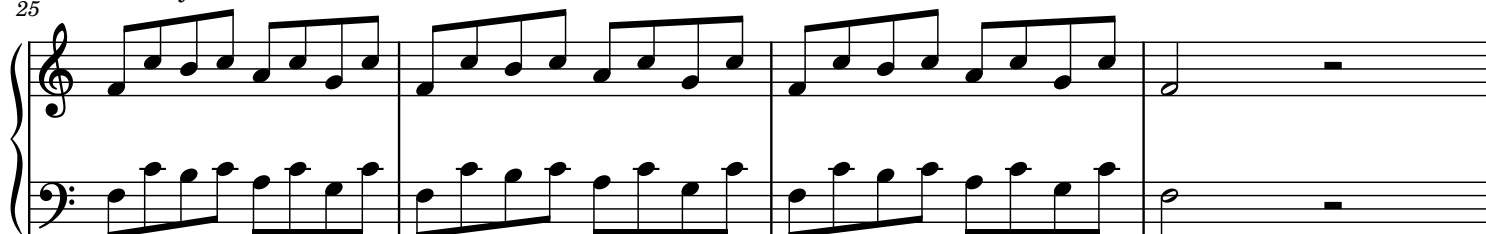
The fifth system of the exercise, measures 17-20, is in 4/4 time. The right hand plays an E phrygian pentachord (E4-F4-G4-A4-B4) in a parallel motion, starting on a half note E4 and moving up stepwise to a half note B4. The left hand plays the same pentachord in a parallel motion, starting on a half note E3 and moving up stepwise to a half note B3. The system ends with a double bar line.

21

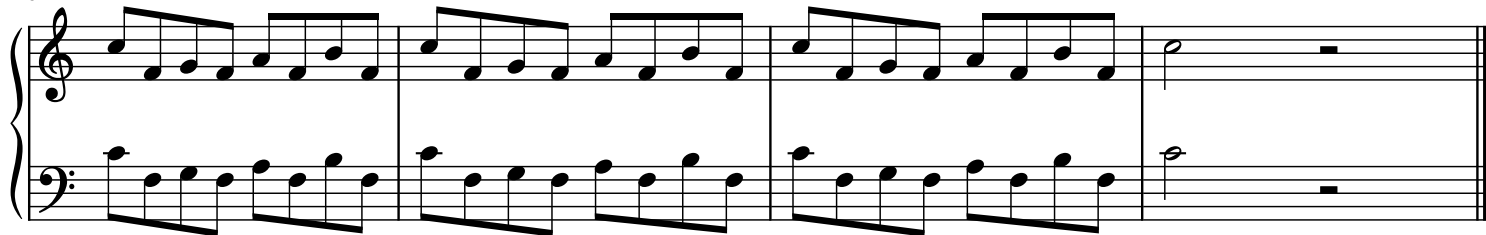


## 4. F Lydian Pentachord.

25



29



**NOTE: These Diatonic Pentachords follow the first five notes of four MODAL scales in the key. The two patterns are Parallel. Notice the slightly different sound they all have.**

**Play through these as a warm-up and LISTEN for the characteristic sound of the Pentachords. Put them in your EAR and your HAND.**